



Bi-National Health Week

October 7-16, 2006

Greater Kansas City Metropolitan Area

www.alianzas.us/bhw

Evaluation Report

EXECUTIVE SUMMARY

Data entry by:

Natalia Suárez Montero

Report prepared by:

Katy Fields, MPA

Christina Vasquez Case, Ph.D.

Alianzas, a program of University of Missouri Extension and the University of Missouri-Kansas City Institute for Human Development, is located at:

UMKC Institute for Human Development

2220 Holmes Street, Third Floor

Kansas City, MO 64108

(816) 235-5840 or (816) 235-1768

www.alianzas.us

This publication was supported by Alianzas, University of Missouri Extension, and the University of Missouri-Kansas City Institute for Human Development. The opinions expressed in this document do not necessarily represent the official position of Alianzas, University of Missouri Extension, or the University of Missouri-Kansas City Institute for Human Development.

TABLE OF CONTENTS

Introduction	3
Summary of Results	
Age	5
Gender	5
Preferred Language	6
Are you Hispanic/Latino?	6
Race	7
Place of Birth: Country	7
Place of Birth: State	8
Place of Current Residence: Country	9
Place of Current Residence: State	10
Highest Level of Education Completed	11
Is this your first time receiving health care?	12
Last Visit to a Health Provider: When	13
Last Visit to a Health Provider: Country	13
Mostly Access Health Care: Country	14
Mostly Access Health Care: Where in the U.S.	14
Health Insurance	15
Health Topics of Most Interest	16
How Learned about Event	18
Quick Summary of Results	19
Appendices	
Appendix A: Evaluation Form	20
Appendix B: Map of Mexican States	22

INTRODUCTION

The purpose of this **executive summary** is to provide findings of the evaluation forms completed during the 2006 Bi-National Health Week in the Greater Kansas City Metropolitan Area. It includes information about the overall event and the individual activities of this week.

The Bi-National Health Week was established in 2001 as a partnership between the California-Mexico Health Initiative and the Mexican Ministry of Health and Foreign Affairs. For the next five years, this partnership has supported a week of health promotion and health education activities intended to improve the health and well-being of migrant and immigrant workers and their families. These activities, held simultaneously during the second week of October every year, occur in select regions of the United States, Mexico, Canada, Guatemala, and El Salvador.

Although the Bi-National Health Week benefits Hispanics/Latinos regardless of their national origin, it targets low-income Mexican communities lacking access to health care. Its purpose is to increase public awareness, understanding, and knowledge of services available at the local level regardless of health care coverage or immigration status.

The Bi-National Health Week in Missouri is an initiative of the Institute for Mexicans Abroad and Alianzas, a program of University of Missouri Extension and the University of Missouri-Kansas City Institute for Human Development. With the Greater Kansas City Metropolitan Area serving as Missouri's first Bi-National Health Week site in 2004, a growing network of both local and statewide community organizations and healthcare providers was established to share information and resources on migrant health. This local partnership initiated the coordination and implementation of the 2006 Bi-National Health Week in the Greater Kansas City Metropolitan Area. A list of planning committee members can be found in Table 1.

Alianzas/UME/UMKC-IHD	Kansas University Cancer Center
Alzheimer's Association of Kansas City	Kansas University Preventative Medicine
American Cancer Association	<i>La Leche</i> League
American Heart Association	Mattie Rhodes Center
Ararat Shriners	MC+ Managed Care
Children's Mercy Hospital	Mexican Consulate
Coalition of Hispanic Organizations	Mid-America Addiction Technology Training Center
Coalition of Hispanic Women Against Cancer	Midwest Transplant Network
El Centro, Inc.	Newhouse
Environmental Protection Agency	Penn Valley Community College
Epilepsy Foundation	Planned Parenthood
Guadalupe Center, Inc.	Rose Brooks Center
Jewish Vocational Service	Seton Center
Kansas City Chronic Disease Coalition	Truman Medical Centers, Inc.
Kansas City Health Department	University of Missouri Extension
Kansas City Public Libraries	The Whole Person
Kansas City Public Television	

SUMMARY OF RESULTS
Bi-National Health Week in the Greater Kansas City Metropolitan Area
October 7-16, 2006

Of the participants that attended the 2006 Bi-National Health Week in the Greater Kansas City Metropolitan Area, 370 valid evaluation forms were completed at 7 events. Table 2 identifies the date, title, and location of each event, as well as the number and percentage of participants that were interviewed at each event.

Table 2: Distribution of Evaluation Forms				
Event	Date	Title	Location	Frequency by No. and Percentage
1	Saturday October 7, 2006	Health Care Focus Event	Bethany Recreation Center	55 (14.86%)
2	Sunday October 8, 2006	Taste of the Westside	Guadalupe Centers, Inc.	68 (18.38%)
3	Tuesday October 10, 2006	Information Distribution and Health Screenings	Mexican Consulate	77 (20.81%)
4	Wednesday October 11, 2006	Information Distribution and Health Screenings	Mexican Consulate	54 (14.59%)
5	Thursday October 12, 2006	Information Distribution and Health Screenings	Mexican Consulate	17 (4.59%)
6	Friday October 13, 2006	Information Distribution and Health Screenings	Mexican Consulate	42 (11.35%)
7	Monday October 16, 2006	Information Distribution and Health Screenings	Mexican Consulate	57 (15.41%)

Age

Participants were asked to indicate their age. Of the 363 participants that responded to this question, the mean (average) age was 33.71. Ages ranged from 18 and 84, with the *greatest* frequency of respondents indicated their age as 23 and 32 (16 respondents each). The mean age was the *highest* at Event 1 (40.28). The mean age was the *lowest* at Event 6 (28.71). See Table 3.

Table 3: Age			
Event	No. of Respondents: Total / Question	Average Age	Age Range
OVERALL	370 / 363	33.71	18-84
Event 1	55 / 54	40.28	20-81
Event 2	68 / 66	38.97	18-84
Event 3	77 / 76	31.14	18-58
Event 4	54 / 54	29.96	18-53
Event 5	42 / 40	33.68	18-73
Event 6	57 / 56	28.71	18-55
Event 7	17 / 17	32.35	18-50

Gender

Participants were asked to indicate their gender. Of the 363 participants that responded to this question 196, or 54.0% were male. The *greatest* number of males attended Event 7 (13, or 76.5%). The *least* number of males attended Event 1 (21, or 38.2%), as noted in Table 4.

Table 4: Gender		
Event	No. of Respondents: Total / Question	Frequency of "Male" by No. and Percentage
OVERALL	370 / 363	196 (54.0%)
Event 1	55 / 55	21 (38.2%)
Event 2	68 / 63	28 (44.4%)
Event 3	77 / 77	43 (55.8%)
Event 4	54 / 53	35 (66.0%)
Event 5	42 / 41	21 (51.2%)
Event 6	57 / 57	35 (61.4%)
Event 7	17 / 17	13 (76.5%)

Preferred Language

Participants were asked to indicate the language they preferred to speak. Of the 331 participants that responded to this question 295, or 89.1% preferred Spanish. The *greatest* number of respondents that preferred Spanish attended Event 7 (15, or 100.0%). The *least* number of respondents that preferred Spanish attended Event 2 (36, or 69.2%), as noted in Table 5.

Event	No. of Respondents: Total / Question	Frequency of “Spanish Preference” by No. and Percentage
OVERALL	370 / 331	295 (89.1%)
Event 1	55 / 53	45 (84.9%)
Event 2	68 / 52	36 (69.2%)
Event 3	77 / 67	66 (98.5%)
Event 4	54 / 52	49 (94.2%)
Event 5	42 / 42	38 (90.5%)
Event 6	57 / 50	46 (92.0%)
Event 7	17 / 15	15 (100.0%)

Are you Hispanic/Latino?

Participants were asked to indicate whether or not they were Hispanic/Latino. If they indicated they were Hispanic/Latino, then participants were asked whether or not they were Mexican, Mexican American, or Chicano; or if they were Other. Of the 363 participants that responded to this question 338, or 93.1%, indicated they were Hispanic/Latino and that they were Mexican, Mexican American, or Chicano. Of significance is that the greatest frequency of respondents at each of the seven events indicated they were Hispanic/Latino and they were Mexican, Mexican American, or Chicano. The *greatest* number of respondents that were Hispanic/Latino and Mexican, Mexican American, or Chicano attended Events 5 and 7 (100.00% each). The *least* number of respondents that were Hispanic/Latino and Mexican, Mexican American, or Chicano attended Event 1 (43, or 82.7%), as noted in Table 6.

Event	No. of Respondents: Total / Question	Frequency of “Hispanic/Latino and Mex, Mex Am or Chicano” by No. and Percentage
OVERALL	370 / 363	338 (93.1%)
Event 1	55 / 52	43 (82.7%)
Event 2	68 / 66	56 (84.8%)
Event 3	77 / 77	75 (97.4%)
Event 4	54 / 54	51 (94.4%)
Event 5	42 / 41	41 (100.0%)
Event 6	57 / 56	55 (98.2%)
Event 7	17 / 17	17 (100.0%)

Race

Participants were asked to indicate their race among the options of White; Black, African American; Asian; American Indian; and Other. Of the 254 participants that responded to this question 237, or 93.3% indicated their race as Other. Of significance is that the greatest frequency of respondents at each of the seven events indicated their race as Other, which they described as “Hispanic”, “Latino”, “Mestizo”, “Mexican”, and “Peruvian”. Furthermore, *all* (100.0%) of the respondents at the five events that occurred at the Mexican Consulate (events 3, 4, 5, 6, and 7) indicated their race as Other. The *least* number of respondents that indicated their race as Other attended Event 1 (3, or 42.9%). See Table 7.

Event	No. of Respondents: Total / Question	Frequency of “Other” by No. and Percentage
OVERALL	370 / 254	237 (93.3%)
Event 1	55 / 7	3 (42.9%)
Event 2	68 / 61	48 (78.7%)
Event 3	77 / 65	65 (100.0%)
Event 4	54 / 20	20 (100.0%)
Event 5	42 / 30	30 (100.0%)
Event 6	57 / 54	54 (100.0%)
Event 7	17 / 17	17 (100.0%)

Place of Birth: Country

Participants were asked to indicate their place of birth by country. Of the 366 participants that responded to this question 318, or 86.9% indicated Mexico. Of significance is that the greatest frequency of respondents at each of the seven events indicated their place of birth by country as Mexico. The *greatest* number of respondents that indicated their place of birth by country as Mexico attended Event 7 (17, or 100.0%). The *least* number of respondents that indicated their place of birth by country as Mexico attended Event 2 (42, or 62.7%). See Table 8.

Event	No. of Respondents: Total / Question	Frequency of “Mexico” by No. and Percentage
OVERALL	370 / 366	318 (86.9%)
Event 1	55 / 53	41 (77.4%)
Event 2	68 / 67	42 (62.7%)
Event 3	77 / 77	75 (97.4%)
Event 4	54 / 54	51 (94.4%)
Event 5	42 / 42	41 (97.6%)
Event 6	57 / 56	51 (91.1%)
Event 7	17 / 17	17 (100.0%)

Place of Birth: State

Participants were asked to indicate if they were born in the state of Missouri, Kansas, or Other. Of the 214 participants that responded to this question, the *greatest frequency* (196, or 91.6%) indicated Other. Of significance is that the greatest frequency of respondents at *each* of the seven events indicated their place of birth by state as other than Kansas or Missouri.*

Of the 196 participants that indicated they were born in a state *other* than Missouri or Kansas, the greatest frequency (44, or 11.9%) indicated they were born in Chihuahua, Mexico. See Table 9.

Event	No. of Respondents: Total / Question	Most Frequently Indicated State	Frequency of "Other" by No. and Percentage
OVERALL	370 / 214	Chihuahua (44, or 11.9%)	196 (91.6%)
Event 1	55 / 11	Kansas (4, or 36.4%)	7 (63.6%)
Event 2	68 / 44	Missouri (9, or 20.5%)	31 (70.5%)
Event 3	77 / 49	Chihuahua (19, or 24.7%)	48 (98.0%)
Event 4	54 / 40	Jalisco (6, or 11.1%)	40 (100.0%)
Event 5	42 / 37	Chihuahua (7, or 16.7%)	37 (100.0%)
Event 6	57 / 24	Chihuahua (5, or 8.8%)	24 (100.0%)
Event 7	17 / 9	Guanajuato, Jalisco, and Michoacán (each at 2, or 11.8%)	9 (100.0%)

* *All* of the respondents at four of the events (events 4, 5, 6, and 7) indicated their place of birth by state as other than Kansas or Missouri.

Place of Current Residence: Country

Participants were asked to indicate their place of current residence by country. Of the 352 participants that responded to this question 345, or 98.0% indicated the United States. Of significance is that the greatest frequency of respondents at each of the seven events indicated their place of current residence by country as the U.S. The *greatest* number of respondents that indicated their place of current residence by country as the U.S. attended Events 2 and 7 (100.0%). The *least* number of respondents that indicated their place of current residence by country as the U.S. attended Event 4 (53, or 96.2%), as noted in Table 10.

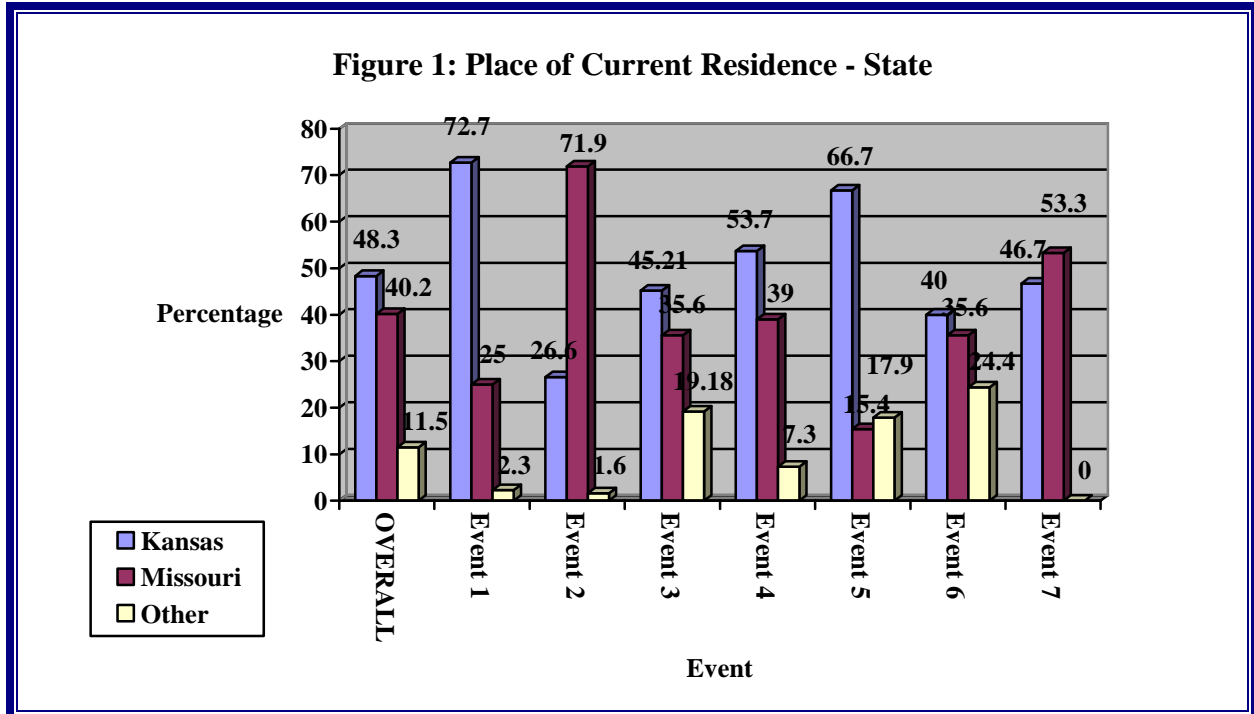
Table 10: Place of Current Residence - Country		
Event	No. of Respondents: Total / Question	Frequency of "U.S." by No. and Percentage
OVERALL	370 / 352	345 (98.0%)
Event 1	55 / 49	48 (98.0%)
Event 2	68 / 66	66 (100.0%)
Event 3	77 / 73	72 (98.6%)
Event 4	54 / 53	51 (96.2%)
Event 5	42 / 40	39 (97.5%)
Event 6	57 / 56	54 (96.4%)
Event 7	17 / 15	15 (100.0%)

Place of Current Residence: State

Participants were asked to indicate if they currently resided in the state of Missouri, Kansas, or Other. Of the 321 participants that responded to this question, 48.3% indicated Kansas. Of significance is that, at five of the events (events 1, 3, 4, 5, and 6), the greatest frequency of respondents indicated Kansas as their place of current residence by state. The greatest frequency of respondents that attended Events 2 and 7 indicated Missouri as their place of current residence by state, as noted in Table 11.

Event	No. of Respondents: Total / Question	Most Frequently Indicated State by Percentage
OVERALL	370 / 321	Kansas (48.3%)
Event 1	55 / 44	Kansas (72.7%)
Event 2	68 / 64	Missouri (71.9%)
Event 3	77 / 73	Kansas (45.21%)
Event 4	54 / 41	Kansas (53.70%)
Event 5	42 / 39	Kansas (66.70%)
Event 6	57 / 45	Kansas (40.0%)
Event 7	17 / 15	Missouri (53.3%)

Figure 1 shows the distribution of respondents that indicated their state of current residence (i.e., Missouri, Kansas or Other) for the overall event and the individual activities.

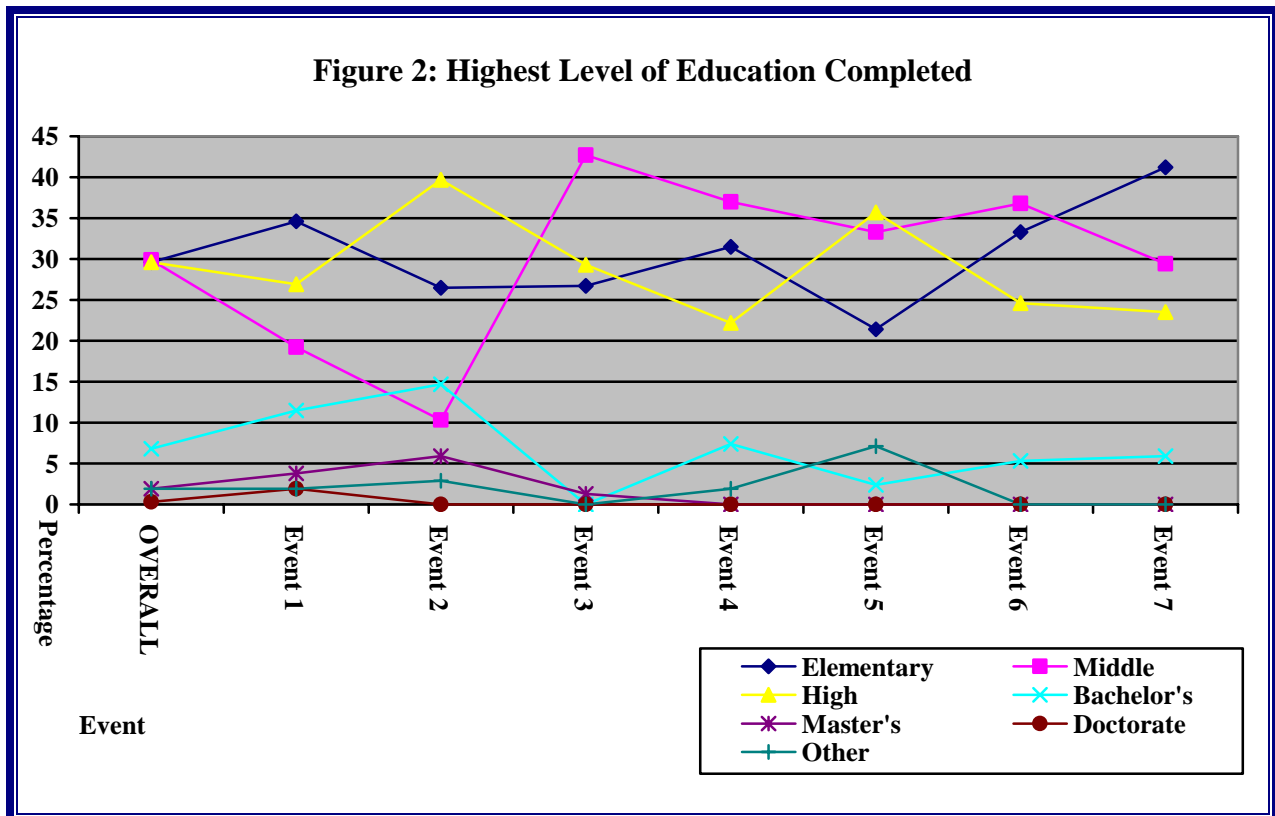


Highest Level of Education Completed

Participants were asked to indicate their highest level of education completed. Of the 365 participants that responded to this question 109, or 29.9%, indicated middle school. However, the overall number of respondents that indicated their highest level of education completed as elementary school (108, or 29.6%) and high school (108, or 29.6%) were significantly close to those who completed middle school.

The respondents that completed the *highest* level of education attended Event 2 (high school: 27, or 39.7%). The respondents that completed the *lowest* level of education attended Event 1 (elementary school: 18, or 34.6%), as noted in Table 12. Figure 2 is a representation of the highest level of education completed at the overall event and the individual activities.

Event	No. of Respondents: Total / Question	Frequency by No. and Percentage
OVERALL	370 / 365	Middle School (109, or 29.9%)
Event 1	55 / 52	Elementary School (18, or 34.6%)
Event 2	68 / 68	High School (27, or 39.7%)
Event 3	77 / 75	Middle School (32, or 42.7%)
Event 4	54 / 54	Middle School (20, or 37.0%)
Event 5	42 / 42	High School (15, or 35.7%)
Event 6	57 / 57	Middle School (21, or 36.8%)
Event 7	17 / 17	Elementary School (7, or 41.2%)

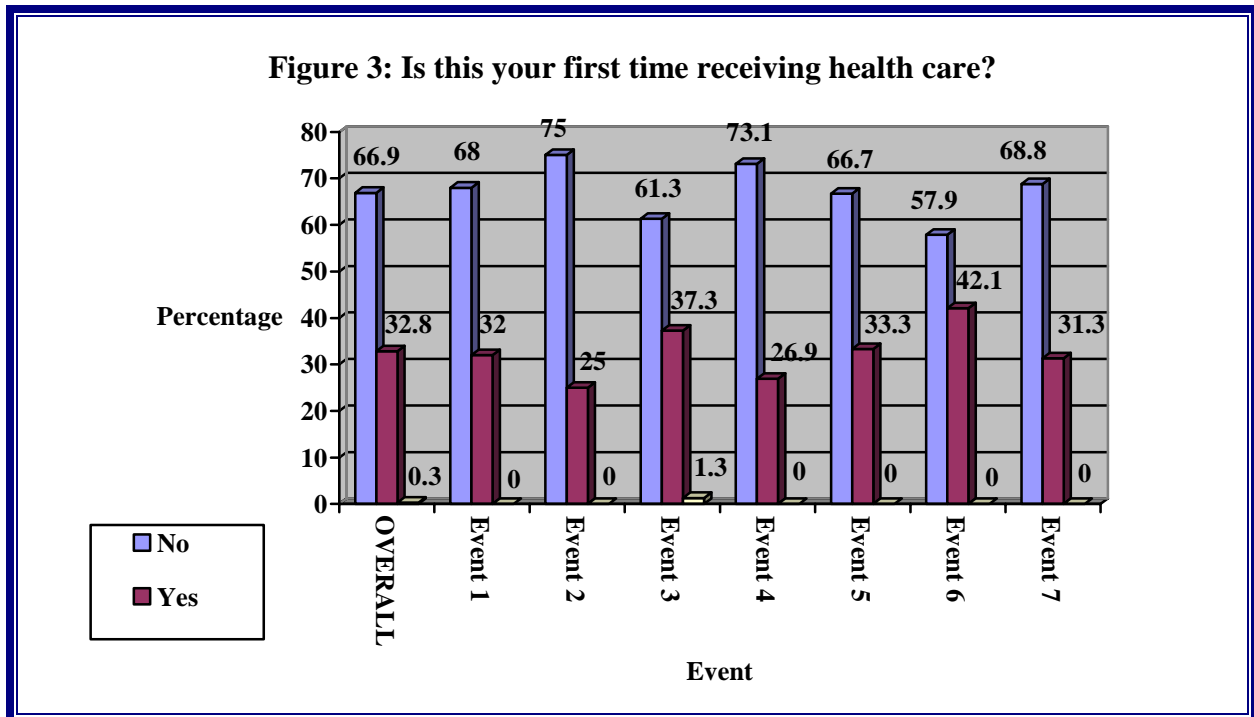


Is this your first time receiving health care?

Participants were asked to indicate their whether or not their first time receiving health care in the U.S. was at the Bi-National Health Week event at which they were present. Of the 357 participants that responded to this question 239, or 66.9%, indicated that it was not their first time receiving health care in the U.S.

Of significance is that the greatest frequency of respondents at each of the seven events indicated that it was not their first time receiving health care in the U.S. Event 2 had the *greatest* number of respondents indicating it was *not* their first time receiving health care in the U.S. (51, or 75.0%). Event 6 had the *least* number of respondents indicating it was *not* their first time receiving health care in the U.S. (33, or 57.9%), as noted in Table 13 and Figure 3.

Event	No. of Respondents: Total / Question	Frequency of "No" by No. and Percentage
OVERALL	370 / 357	239 66.9%
Event 1	55 / 50	34 68.0%
Event 2	68 / 68	51 75.0%
Event 3	77 / 75	46 61.3%
Event 4	54 / 54	38 61.3%
Event 5	42 / 39	26 66.7%
Event 6	57 / 57	33 57.9%
Event 7	17 / 16	11 68.8%



Last Visit to a Health Provider: When

Participants were asked to indicate if their last visit to a health provider occurred less than 1 year ago, 1 to 2 years ago, 3 to 4 years ago, 5 or more years ago, or Never. Of the 361 participants that responded to this question 207, or 57.3%, indicated that their last visit to a health provider occurred less than 1 year ago. Of significance is that the greatest amount of respondents at each of the seven events indicated that their last visit to a health provider occurred less than one year ago. Event 2 had the *greatest* number of respondents indicating that their last visit to a health provider occurred less than one year ago (44, or 66.7%). Event 5 had the *least* number of respondents indicating that their last visit to a health provider occurred less than one year ago (16, or 39.0%), as noted in Table 14.

Event	No. of Respondents: Total / Question	Frequency of “Less than one year ago” by No. and Percentage
OVERALL	370 / 361	207 57.3%
Event 1	55 / 54	32 59.3%
Event 2	68 / 66	44 66.7%
Event 3	77 / 75	46 61.3%
Event 4	54 / 54	28 51.9%
Event 5	42 / 41	16 39.0%
Event 6	57 / 55	33 60.0%
Event 7	17 / 16	8 50.0%

Last Visit to a Health Provider: Country

Participants were asked to indicate in which country their last visit to a health provider occurred. Of the 346 participants that responded to this question 281, or 81.2%, indicated that their last visit to a health provider occurred in the U.S. Of significance is that the greatest frequency of respondents at each of the seven events indicated that their last visit to a health provider occurred in the U.S. The *greatest* number of respondents that indicated their last visit to a health provider occurred in the U.S. attended Event 2 (43, or 93.5%). The *least* number of respondents that indicated their last visit to a health provider occurred in the U.S. attended Event 7 (9, or 52.9%), as noted in Table 15.

Event	No. of Respondents: Total / Question	Frequency of “U.S.” by No. and Percentage
OVERALL	370 / 346	281 81.2%
Event 1	55 / 49	43 87.8%
Event 2	68 / 62	58 93.5%
Event 3	77 / 73	58 79.5%
Event 4	54 / 53	40 75.5%
Event 5	42 / 38	31 81.6%
Event 6	57 / 54	42 77.8%
Event 7	17 / 17	9 52.9%

Mostly Access Health Care: Country

Participants were asked to indicate in which country they most likely access health care. Of the 343 participants that responded to this question 268, or 78.1%, indicated that the country in which they most likely access health care is the U.S. Of significance is that the greatest amount of respondents at each of the seven events indicated that the country in which they most likely access health care is the U.S. Event 2 had the *greatest* number of respondents indicating that the country in which they most likely access health care is the U.S. (57, or 86.4%). Event 7 had the *least* number of respondents indicating that the country in which they most likely access health care is the U.S. (9, or 64.3%), as noted in Table 16.

Event	No. of Respondents: Total / Question	Frequency of "U.S." by No. and Percentage
OVERALL	370 / 343	268 78.1%
Event 1	55 / 54	46 85.2%
Event 2	68 / 66	57 86.4%
Event 3	77 / 71	57 80.3%
Event 4	54 / 47	35 74.5%
Event 5	42 / 36	28 77.8%
Event 6	57 / 55	36 65.5%
Event 7	17 / 14	9 64.3%

Mostly Access Health Care: Where in the U.S.

The respondents that indicated they mostly accessed health care in the U.S. were asked to indicate if they most frequently used a community health clinic; a doctor’s office, HMO/PPO; an emergency room; a health department; or Other. Of the 258 respondents 104, or 40.3%, indicated that they most frequently use a doctor’s office, HMO/PPO. Of significance is that the greatest frequency of respondents that attended Events 1, 2 and 6 indicated that they most frequently used a doctor’s office, HMO/PPO. The greatest frequency of respondents that attended Events 3, 4, 5, and 7 indicated that they most frequently used a community health clinic, as noted in Table 17.

Event	No. of Respondents: Total / Question	Most Frequently Indicated Site by Percentage
OVERALL	370 / 258	Doctor’s Office, HMO/PPO (104, or 40.3%)
Event 1	55 / 42	Doctor’s Office, HMO/PPO (18, or 42.9%)
Event 2	68 / 57	Doctor’s Office, HMO/PPO (33, or 57.9%)
Event 3	77 / 55	Community Health Clinic (25, or 45.5%)
Event 4	54 / 34	Community Health Clinic (12, or 35.3%)
Event 5	42 / 28	Community Health Clinic (13, or 46.4%)
Event 6	57 / 33	Doctor’s Office, HMO/PPO (17, or 51.5%)
Event 7	17 / 9	Community Health Clinic (4, or 44.4%)

Health Insurance

Participants were asked to indicate whether or not they had health insurance. Of the 362 participants that responded to this question, 244, or 67.4%, indicated that they did not have health insurance in any country. Of significance is that the greatest frequency of respondents at each of the seven events indicated that they did not have health insurance in any country. Event 7 had the *greatest* number of respondents indicated that they did not have health insurance in any country attended (13, or 76.5%). Event 2 had the *least* number of respondents indicating that they did not have health insurance in any country (38, or 56.7%), as noted in Table 18.

Table 18: Health Insurance		
Event	No. of Respondents: Total / Question	Frequency of “No health insurance in any country” by No. and Percentage
OVERALL	370 / 362	244 67.4%
Event 1	55 / 54	39 72.2%
Event 2	68 / 67	38 56.7%
Event 3	77 / 75	54 72.0%
Event 4	54 / 54	34 63.0%
Event 5	42 / 40	29 72.5%
Event 6	57 / 55	37 67.3%
Event 7	17 / 17	13 76.5%

Health Topics of Most Interest

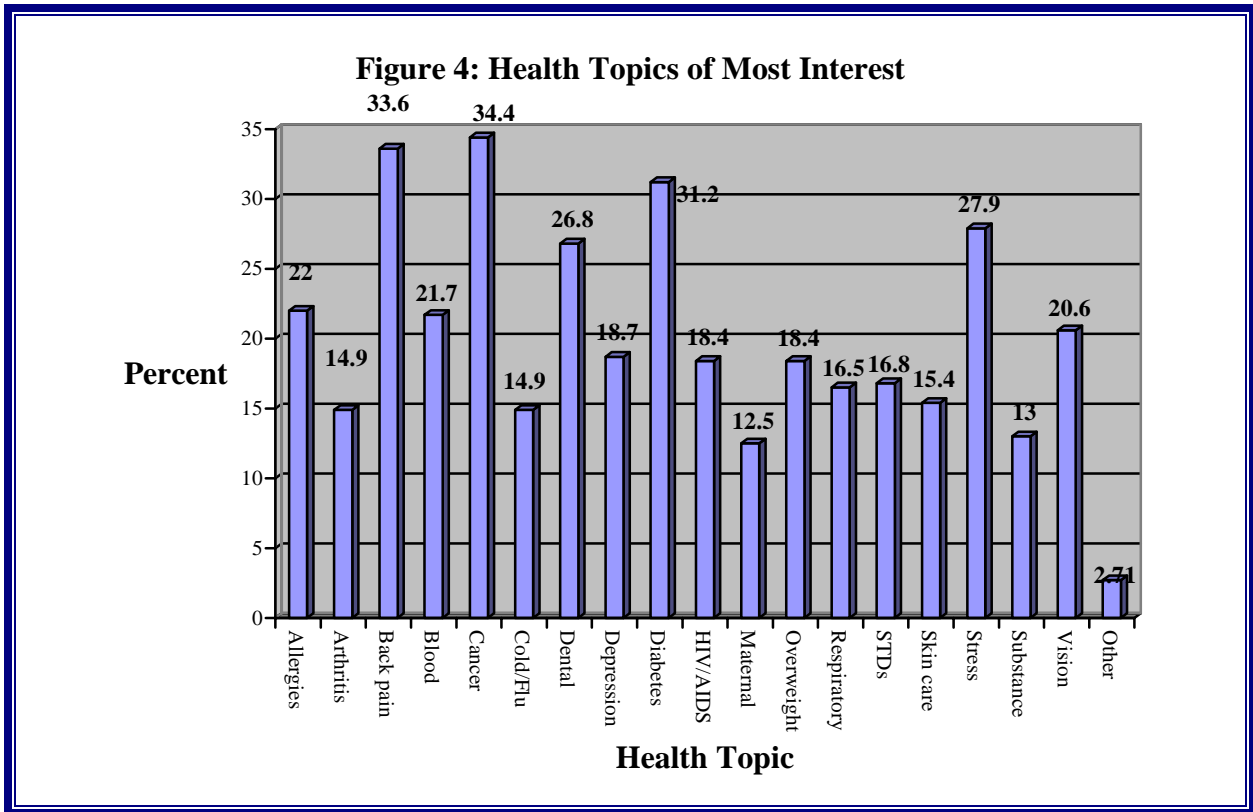
Participants were asked to indicate the health topics that most interested them. They were provided the following topics and asked to indicate all that applied: allergies; arthritis; back pain; blood pressure and/or circulation; cancer; cold and/or flu; dental health; depression; diabetes; HIV/AIDS; maternal and child health; overweight/obesity; respiratory health; sexually transmitted disease; skin care; stress, anxiety, and/or exhaustion; substance abuse (alcohol, tobacco/smoking, drug); vision; and Other.

Of the 369 participants that responded to this question 127, or 34.4%, indicated they were most interested in the health topic of **cancer**. Other health topics that participants indicated most interested them were (in descending order) **back pain** (124, or 33.6%); **diabetes** (115, or 31.2%); **stress, anxiety, and/or exhaustion** (103, or 27.9%); and **dental health** (99, or 26.8%). Of significance is that the three health topics that most interested respondents at five events (events 2, 3, 4, 5, and 6) were some combination of cancer; back pain; diabetes; stress, anxiety, and/or exhaustion; and dental health.

The three health topics that most interested respondents that attended Event 1 were diabetes, cancer, and blood pressure and/or circulation. The three health topics that most interested respondents that attended Event 7 were cancer; dental health; and an equal interest in sexually transmitted diseases; skin care; and stress, anxiety, and/or exhaustion. See Table 19.

Event	No. of Respondents: Total / Question	Frequency by No. and Percentage
OVERALL	370 / 369	1. Cancer (34.4%) 2. Back pain (33.6%) 3. Diabetes (31.2%)
Event 1	55 / 55	1. Diabetes (58.2%) 2. Cancer (52.7%) 3. Blood pressure and/or circulation (50.9%)
Event 2	68 / 68	1. Stress (41.2%) 2. Back pain (39.7%) 3. Dental health (38.2%)
Event 3	77 / 77	1. Back pain (35.1%) 2. Diabetes (33.8%) 3. Dental health (31.2%)
Event 4	54 / 54	1. Back pain (33.3%) 2. Cancer (31.5%) 3. Stress, anxiety, and/or exhaustion (29.6%)
Event 5	42 / 41	1. Cancer (36.6%) 2. Dental health (31.7%) 3. Back pain (29.3%)
Event 6	57 / 57	1. Back pain (28.1%) 2. Cancer (26.3%) 3. Dental health (19.3%)
Event 7	17 / 17	1. Cancer (41.2%) 2. Dental health (35.3%) 3. Sexually transmitted disease / Skin care / Stress, anxiety, and/or exhaustion (29.4% each)

Figure 4 is a representation of the health topics that most interested respondents at the 2006 Bi-National Health Week in the Greater Kansas City Metropolitan Area.



How Learned about Event

Participants were asked to indicate how they learned about the Bi-National Health Week event they attended. They were provided the following methods and asked to indicate all that applied: “I did not previously learn about this event. I came here for other reasons”; community center or service agency; friend or family; Mexican Consulate; newspaper; radio; and Other.

Of the 365 participants that responded to this question 203, or 55.6%, indicated “I did not previously learn about this event. I came here for other reasons.” Of significance is that the greatest amount of respondents at five events (events 3, 4, 5, 6, and 7) indicated “I did not previously learn about this event. I came here for other reasons.” The greatest amount of respondents at Event 1 indicated “Other”; those at Event 2 indicated “Radio,” as noted in Table 20.

Table 20: How Learned about Event		
Event	No. of Respondents: Total / Question	Frequency by No. and Percentage
OVERALL	370 / 365	“I did not previously learn about this event. I came here for other reasons.” (55.6%)
Event 1	55 / 55	Other (45.45%)
Event 2	68 / 68	Radio (51.5%)
Event 3	77 / 77	“I did not previously learn about this event. I came here for other reasons.” (76.6%)
Event 4	54 / 54	“I did not previously learn about this event. I came here for other reasons.” (92.6%)
Event 5	42 / 37	“I did not previously learn about this event. I came here for other reasons.” (100.0%)
Event 6	57 / 57	“I did not previously learn about this event. I came here for other reasons.” (71.9%)
Event 7	17 / 17	“I did not previously learn about this event. I came here for other reasons.” (88.2%)

QUICK SUMMARY OF RESULTS

Bi-National Health Week in the Greater Kansas City Metropolitan Area

October 7-16, 2006

This **executive summary** provides findings of the evaluation forms completed during the 2006 Bi-National Health Week in the Greater Kansas City Metropolitan Area. It includes information about the overall event and the individual activities of this week.

Total number of survey respondents: **370**

Average age: **33.71**

The greatest number of survey respondents indicated that they...

- ...preferred to speak **Spanish**;
- ...were **male**;
- ...were **Hispanic/Latino and they were Mexican, Mexican American, or Chicano**;
- ...were born in the state of **Chihuahua**;
- ...were born in the country of **Mexico**;
- ...currently reside in the state of **Kansas**;
- ...currently reside in the **U.S.**;
- ...had completed **middle school**, their highest level of education;
- ...**did not receive** health care for the first time in the U.S. at this event;
- ...last visited a health provider **less than 1 year** ago and this visit was in the **U.S.**;
- ...most likely access health care in the **U.S.**;
- ...most frequently use the services of a **doctor's office, HMO/PPO**;¹
- ...**do not have** health insurance;
- ...are most interested in the health topics of (in descending order) **cancer, back pain; diabetes; stress, anxiety, and/or exhaustion; and dental health**;
- ...learned about this event through "**I did not previously learn about this event. I came here for other reasons.**"

The Bi-National Health Week in Missouri is an initiative of the Institute for Mexicans Abroad and Alianzas, a program of University of Missouri Extension and the University of Missouri-Kansas City Institute for Human Development. These organizations would like to express their gratitude to the network of community organizations and healthcare providers in Kansas City, specifically, and statewide, generally, for their support and assistance in coordinating and implementing the 2006 Bi-National Health Week in the Greater Kansas City Metropolitan Area.

If you have comments or questions regarding this executive summary, please contact Alianzas at:

UMKC Institute for Human Development
2220 Holmes Street, Third Floor
Kansas City, MO 64108
(816) 235-5840 or (816) 235-1768
www.alianzas.us

¹ Only those respondents who indicated that they most likely access health care in the United States were asked this question.

SEMANA BINACIONAL DE LA SALUD 2006 – ENCUESTA

*Agradecer al encuestado por su tiempo. La información que nos provee es estrictamente **confidencial** y únicamente será usada para mejorar los servicios de salud en el área metropolitana de Kansas City.*

POR FAVOR INDICAR EL EVENTO

- 7 de Oct. Bethany Recreation Center 11 de Oct. Consulado de México 13-15 de Oct. AIDS Awareness Display
 8 de Oct. Taste of the Westside 12 de Oct. Consulado de México 16 de Oct. Consulado de México
 10 de Oct. Consulado de México 13 de Oct. Consulado de México

1. Edad:	2. Sexo: <input type="checkbox"/> Mujer <input type="checkbox"/> Hombre	3. Idioma de preferencia: <input type="checkbox"/> Inglés <input type="checkbox"/> Español <input type="checkbox"/> Otro: _____	4. ¿Es usted Hispano/Latino? <input type="checkbox"/> No, no soy Hispano/Latino. <input type="checkbox"/> Si, soy Mexicano, Mexicano Americano, Chicano. <input type="checkbox"/> Si, soy: _____ (ej: Guatemalteco, Cubano, etc.)
-----------------	--	---	--

5. Raza: Blanco Negro, Africano-Americano Asiático Indio-Americano Otro: _____

6. Lugar de Nacimiento:

a. País:	<input type="checkbox"/> E.U.A.	<input type="checkbox"/> México	<input type="checkbox"/> Otro: _____
b. Estado:	<input type="checkbox"/> Missouri	<input type="checkbox"/> Kansas	<input type="checkbox"/> Otro: _____

7. Lugar de Residencia:

a. País:	<input type="checkbox"/> E.U.A.	<input type="checkbox"/> México	<input type="checkbox"/> Otro: _____
b. Estado:	<input type="checkbox"/> Missouri	<input type="checkbox"/> Kansas	<input type="checkbox"/> Otro: _____

8. Nivel de Estudios:

<input type="checkbox"/> 1. Primaria	<input type="checkbox"/> 3. Preparatoria	<input type="checkbox"/> 5. Maestría	<input type="checkbox"/> 7. Otro: _____
<input type="checkbox"/> 2. Secundaria	<input type="checkbox"/> 4. Licenciatura	<input type="checkbox"/> 6. Doctorado	

9. ¿Es la primera vez que usted recibe servicios médicos en los E.U.A? Si No No se

10. a. ¿Cuándo fue su última visita con un doctor (médico, enfermera, etc.)?
 Menos de un año De 1 a 2 años De 3 a 4 años 5 o mas años No se

b. ¿En que país fue su última visita con un doctor (médico, enfermera etc.)?
 E.U.A. México Otro: _____

11. a. ¿En que país usa usted servicios de salud con más frecuencia?
 E.U.A. México Otro: _____

b. ¿Únicamente si usted contestó “E.U.A.”, cual de los siguientes servicios de salud usa usted con más frecuencia? (Elija una opción)

<input type="checkbox"/> Clínica de salud comunitaria	<input type="checkbox"/> Consultorio médico o HMO/PPO	<input type="checkbox"/> Sala de emergencias
<input type="checkbox"/> Departamento de Salud	<input type="checkbox"/> Otro: _____	

12. ¿Tiene usted seguro médico? (Puede elegir varias opciones)
 No Si, en E.U.A. Si, en México Si, en otro país

13. ¿Cuál de los siguientes temas sobre salud le interesen más? (Puede elegir varias opciones)

<input type="checkbox"/> Alergias	<input type="checkbox"/> Salud dental	<input type="checkbox"/> Salud respiratoria
<input type="checkbox"/> Artritis	<input type="checkbox"/> Depresión	<input type="checkbox"/> Enfermedades transmitidas sexualmente
<input type="checkbox"/> Dolor de espalda	<input type="checkbox"/> Diabetes	<input type="checkbox"/> Cuidados de la piel
<input type="checkbox"/> Presión sanguínea y/o circulación	<input type="checkbox"/> SIDA	<input type="checkbox"/> Estrés, Ansiedad y/o cansancio
<input type="checkbox"/> Cáncer	<input type="checkbox"/> Maternidad	<input type="checkbox"/> Abuso de sustancias (alcohol, drogas)
<input type="checkbox"/> Resfriados/gripe	<input type="checkbox"/> Obesidad, sobrepeso	<input type="checkbox"/> Vista
<input type="checkbox"/> Otro: _____		

14. ¿Cómo se entero usted de este evento? (Puede elegir varias opciones)

<input type="checkbox"/> No estaba enterado de este evento.	<input type="checkbox"/> Consulado de México
<input type="checkbox"/> Vine por otras razones.	<input type="checkbox"/> Periódico
<input type="checkbox"/> Centro comunitario	<input type="checkbox"/> Radio
<input type="checkbox"/> Familia o amigo	<input type="checkbox"/> Otro: _____

APPENDIX B: MAP OF MEXICAN STATES



Legend key:

AGS	Aguascalientes	GTO	Guanajuato	ROO	Quintana Roo
BCA	Baja California	HGO	Hidalgo	SIN	Sinaloa
BCS	Baja California Sur	JAL	Jalisco	SLP	San Luis Potosí
CAM	Campeche	MEX	México	SON	Sonora
CHI	Chiapas	MIC	Michoacán	TAB	Tabasco
CHH	Chihuahua	MOR	Morelos	TMP	Tamaulipas
COA	Coahuila	NAY	Nayarit	TLA	Tlaxcala
COL	Colima	NLE	Nuevo León	VER	Veracruz
DIF	Distrito Federal	OAX	Oaxaca	YUC	Yucatán
DGO	Durango	PUE	Puebla	ZAC	Zacatecas
GRO	Guerrero	QRO	Querétaro		

“Flags of the World: Mexico States Map.” Tour by Mexico and António Martins.
[http://www.crwflags.com/fotw/flags/mx\(.html\)](http://www.crwflags.com/fotw/flags/mx(.html)), site found 23 Jan 200